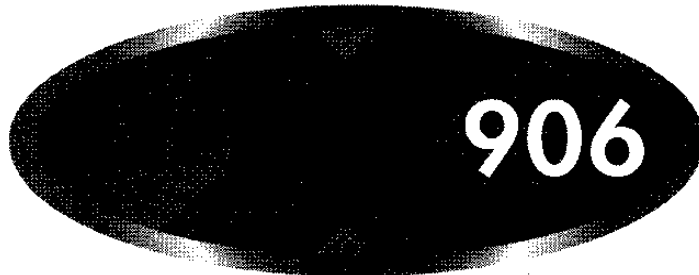




BELTRONICS™

Leadership through Innovation and Technology®



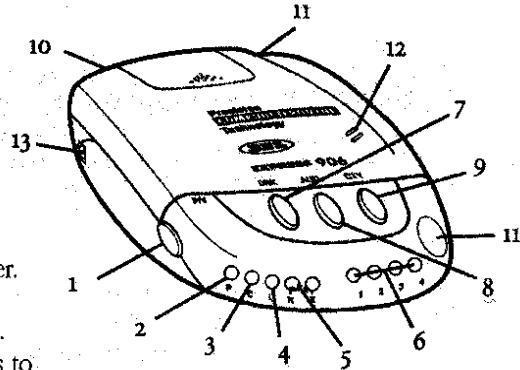
Owner's Manual

To ensure maximum benefit from your unit, please read the entire manual before operating your detector.

Remember, owning a radar detector does not give you a license to speed. Alerts from a Radar detector serve as an effective reminder to check your speed. Laws vary throughout North America governing the use of a Radar detector. It is your responsibility to follow these laws.

Profile of Features

1. **P/V (Power/Volume) Button:** pressing P/V briefly will turn the unit ON. Pressing P/V a second time will bypass the Power-Up Test Sequence. Pressing and holding the P/V button will change the audio level.
2. **P (Power-on) Indicator:** green "P" LED illuminates to confirm unit is receiving power.
3. **C (City Mode) Indicator:** green "C" LED illuminates confirming city mode is engaged.
4. **L (Laser) Indicator:** red "L" LED illuminates to confirm detection of Laser signals.
5. **Ka/K/X Visual Alerts:** the Radar band received is confirmed by the illumination of either the red K LED or the amber X LED, both LEDs illuminate to confirm detection of Super Wideband Ka.
6. **4-LED display:** LEDs illuminate sequentially to confirm the strength of Radar signals. Different alert patterns confirm detection of Laser, Safety Warning System® and VG-2 signals.
7. **DRK (Dim/Dark) Button:** provides dim or dark settings of the LED display for discreet night travel. Audio alerts are not affected by this mode.
8. **AUD (Audio Mute) Button:** provides automatic and manual muting of X, K, Super Wideband Ka Radar and manual muting of SWS™ alerts.
9. **CTY (City/Highway) Button:** minimizes unwanted X band alerts without reducing sensitivity.
10. **Antenna:** Radar signals are received by a patented diecast antenna with integrated transition to microstrip mixer.
11. **Laser Optical Sensors:** collect Laser signals from in front and behind.
12. **Audio Speaker:** all audible alerts are emitted from this location.
13. **Power Jack:** EXPRESS 906 operates in any vehicle with a 13.8 volt DC negative ground system.



Description of Features

Power-Up Test Sequence

Each time your unit is turned on, an automatic test sequence follows. This test consists of the illumination of all LEDs followed by the sounding (in order) of the Laser, Ka, K, X and Safety Warning System® alerts.

Tutorial Mode

The Tutorial mode allows you to become more familiar with all audible and visual alerts. To engage this mode, press and hold CTY, then press AUD when the unit is **OFF**. The unit will cycle continuously through audio/visual alerts for Laser, Ka, K, X and VG-2 Guard® Alert as well as sample SWS™ messages categories. To exit tutorial mode, press the P/V button and your unit will be **ON** and ready to receive signals.

Memory Retention of Feature Selections

Any time your unit is turned off or unplugged from the cigarette lighter plug, all feature settings are retained in the detector's memory. Memory retention eliminates the need to reset your preferred feature settings each time your unit is turned OFF and then back ON.

Adjusting the Audio Level

Once your unit has completed the self-test, the audio level can be adjusted by pressing and holding the P/V button. As you hear the audio level change, the 4-LED display provides a visual reference of the audio level. To reverse the direction in which the audio cycles, briefly release, then hold down the P/V button again.

DRK (Dim/Dark) Button

Press the DRK button once to engage the "dim" mode of the LED display. Press the DRK button again to completely cancel illumination of the LED display; the green "P" LED will remain in "dim" mode to confirm your unit is receiving power. Press DRK a third time to return the display to full bright.

Note: if you press the DRK button and do not receive audible confirmation, the audio level has been set too low.

AUD (Audio Mute) Button (Radar and SWS™)

The AUD button provides three settings: **Continuous Audio**, **Automatic Mute** and **Manual Mute**. **Continuous Audio:** Your unit has been preset at the factory to provide continuous X/K/Ka audio alerts. This standard setting is often preferred when background noise in a vehicle is loud.

Automatic Mute: Press the AUD button once when the unit is receiving NO alerts to engage Automatic Mute mode. The alert pattern when this mode is activated consists of several X/K or Ka alerts followed by a "clicking" tone which will monitor the duration of the signal encounter. As the signal increases in intensity, the "clicking" tone will become more rapid. Automatic Mute mode enables you to conveniently monitor extended encounters without having to manually mute or adjust the volume setting. To return to the audio alert mode, press the AUD button a second time (while the unit is not alerting).

Manual Mute: Regardless of the AUD mode selected (continuous or Automatic), the audio alerts can be completely muted by pressing the AUD button during an alert. Once the alert has passed, the unit will revert to the previous AUD setting (continuous or automatic mute).

CTY (City/Highway) Button

The CTY button is designed to reduce the number of alerts received from unwanted sources such as door alarms, intrusion alarms and other devices which share X band with police radar. Signals from non-police Radar sources are frequently encountered in urban and suburban areas, making use of this mode ideal in these areas.

Press CTY once to engage the city mode. With CTY engaged, no audible alert will be heard until the signal strength reaches a preset level. Visual alerts, however, will be processed the instant an X band signal is detected, keeping you quietly informed.

Activating CTY mode will not change K or Super Wideband Ka alert patterns. Detection of even

the weakest K or Super Wideband Ka signals will result in immediate audio and visual alerts. In addition, reception of Instant-On X band Radar produces the special Instant-On alert.

NOTE: CTY mode has no effect on the reception of Laser signals.

Two Driver Selectable Features

EXPRESS 906 contains two Driver Selectable Features: Safety Warning System® (factory shipped ON) and VG-2 Guard® Alert (factory shipped OFF). When activated, Safety Warning System® will detect signals from SWS™ transmitters and alert you to potential road hazards in five different categories (see enclosed SWS™ insert). VG-2 Guard Alert®, when activated, will detect signals from the Interceptor VG-2 Radar Detector Detector; factory setting is OFF. *Note: only engage VG-2 Guard® Alert in areas known to use the Interceptor VG-2 Radar Detector Detector.*

Entering Selectable Features Mode

1. With the unit OFF, press the CTY and P/V buttons simultaneously.
2. A "beep" will be heard, coupled with the illumination of the amber "X" LED.
3. The first LED in the signal strength display confirms the status of the SWS™ feature. If the LED is solid, SWS™ feature is ON, but may be turned OFF by pressing the AUD button.
4. Press the CTY button to go to VG-2 Guard® Alert feature.
5. The second red LED in the signal strength display confirms the status of VG-2 Guard® Alert. If the LED is solid, the feature is ON, but may be turned OFF by pressing the AUD button.
6. Press the P/V button to exit Selectable Features mode. Two "beeps" confirm you have exited Selectable Features and your unit will be operational, based on your selections made.

Installation

General Guidelines

Do not mount your unit directly behind windshield wipers or mirrored sunscreens which block Radar and Laser signals and substantially reduce warning range. Unlike "after market" mirrored sunscreens, regular tinted glass does not affect Radar reception. Radar signals are also reflected by the "heated windshield" known as Instaclear® and Electriclear® available as an option on some vehicles, making any detector ineffective. If in doubt, check with an appropriate dealership to see if this applies to your vehicle.

To achieve optimum performance, regardless of which mounting position you choose, follow these basic steps:

1. Consider occupant safety when selecting a mounting location. Choose a location where the unit will not be hazardous in case of an accident.

4

2. For optimum detection, position your unit with a clear, unobstructed view of the road from the front and rear.

Instaclear is a registered trademark of the Ford Motor company, Electriclear is a registered Trademark of Libbey, Owens, Ford and Delco-Remy.

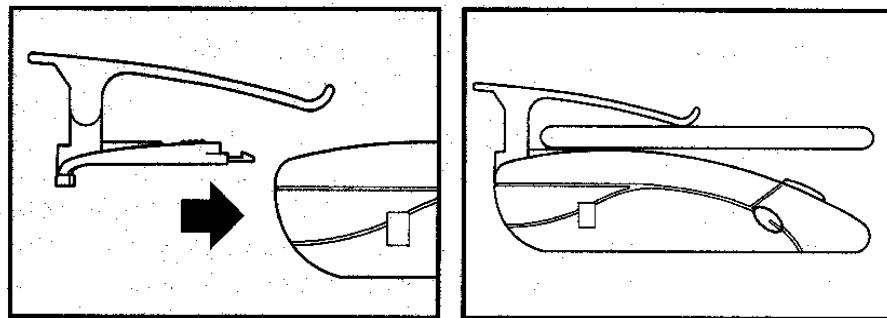
3. Do not allow the unit to make contact with the windshield. This will eliminate unnecessary vibration.
4. Avoid placing your unit in direct sunlight. During the summer, interior temperatures of an enclosed vehicle can sometimes reach temperatures that will cause premature aging of the unit.
5. Your detector is not waterproof; exposure to water may cause damage.

Dash Mounting

1. Select an area that is relatively level, clean and dry. Adhere the soft portion of the enclosed hook and loop fastener to this area and the corresponding hard portion to the bottom of your unit.
2. Fasten unit to dash by placing hook and loop pieces together.

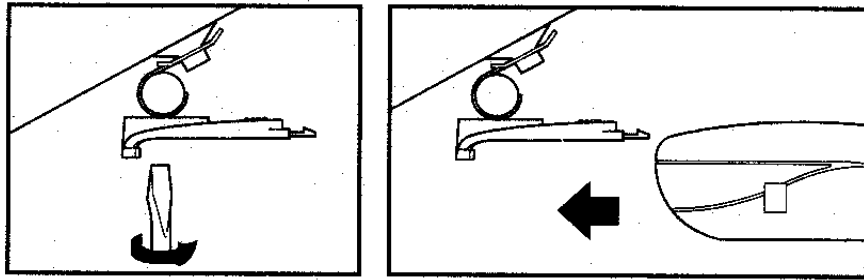
Visor Mounting

1. Remove the detector's cover by pressing on the raised dots and pushing outward. Store the cover.
2. Slide the visor clip onto the top of the detector until it snaps into place. Clip the detector to the edge of the sun visor nearest the windshield.



Windshield Mounting

1. Remove the detector's cover by pressing on the raised dots and pushing outward.
2. Clean the selected windshield area, position the suction-cup mount on the windshield and press firmly on each suction cup to secure it in place.
3. Use a screw driver or small coin to adjust the suction-cup mount until the base plate is level.



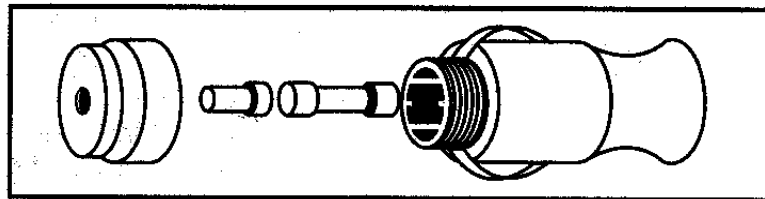
- Slide the detector onto the base plate until it snaps into place.
Note: some vehicles have a plastic coating on the inside of the windshield designed to protect occupants in case of an accident. Use of the windshield bracket on this type of windshield can permanently mark the surface. Check with your dealer if you are unsure whether your vehicle is equipped with this type of windshield.

Power Connection

Your unit operates on 13.8 volts DC and receives power from the cigarette lighter socket. The cigarette lighter plug has been designed to fit universally in all sockets. The lighter socket must be clean and well grounded for proper operation.

Fuse Replacement

- Carefully unscrew the tip of the cigarette lighter plug, remove the tip and the fuse. Replace with a 1-amp, 3AG fuse. *Defeating the fuse protection can damage your unit or your vehicle electrical system and will void your warranty.*



Type of Radar Transmissions

- Continuous Wave Radar:** Radar systems that transmit a continuous, uninterrupted signal are commonly used in fixed installations and are designed to transmit either X, K or Super Wideband Ka signals.



2. **Instant-On or Pulsed Radar:** More difficult to detect than continuous wave Radar, Instant-On or Pulsed Radar is "off" until activated to measure the speed of a targeted vehicle. The industry-leading sensitivity levels provided by your EXPRESS 906 are critical for adequate warning when Instant-On Radar is detected at a vehicle traveling ahead of you.

Laser Alerts

When Laser is detected, the 4 red LED signal strength display will flash in a "railroad" pattern (two outside LEDs followed by the two inside LEDs). This illumination pattern occurs rapidly and is coupled with the illumination of the red Laser LED (L) and the distinct Laser audio alert.

If a vehicle is a long distance from the source of laser pulses, fewer pulses will generally be received. The closer the vehicle is to the source of Laser pulses, the greater the likelihood of receiving a steady stream of Laser pulses. The reason for this is the aiming stability of the Laser gun and the fact that it is impossible to hold the gun absolutely still. Any movement of the gun results in motion of the beam at the target. The further the target, the greater the displacement of the beam and the shorter the dwell time of the beam at the target point. Therefore, there is the possibility of receiving only a few Laser pulses. Due to these characteristics, all laser alerts received from your unit should be taken seriously.

Performance Verification

Conditions that affect Radar alerts

If you feel your unit is not alerting properly, keep in mind that there are many conditions that influence the intensity or duration of an alert.

1. The police are using Instant-On/Pulsed radar, in which case no signal is transmitted until visual contact has been made with your vehicle. For detection of this signal, you must rely on reflected signals from Radar directed at traffic traveling ahead of you.
2. The police Radar unit is positioned perpendicular to the road, around a curve, or just over the crest of a hill, thus, significantly reducing the reception range.
3. The highway traffic between your vehicle and the police Radar source is heavy. This blocks/reflects transmitted signals. The presence of several large trucks between you and the police Radar unit could also significantly reduce reception.
4. Rain or humid weather conditions can absorb transmitted signals before they reach your vehicle, again reducing detection range.
5. The police Radar unit is not properly tuned and is transmitted outside the allocated X/K/Ka frequency ranges.

Conditions that affect Laser alerts

If you feel your unit is not properly alerting to the presence of Laser signals, keep in mind that rain, fog, high humidity and other weather conditions can affect the range that the laser beam can be detected.

Your unit has been carefully designed and is manufactured to the highest quality control standard to ensure reliable and trouble-free performance. If service of your unit is required, please review the section pertaining to Service (see page 9).

Troubleshooting

If your unit is not receiving power, or not operating correctly, please refer to the outline below:

Problem	Possible Cause	Corrective Procedure
Unit NOT Receiving power	Plug NOT properly inserted	Reinsert plug and rotate
	Fuse in power cord defective	Replace with 1amp 250 Volt 3AG fuse
	Lighter socket not clean	Consult your dealer or a Professional mecha
"Poor" Detection Range	Antenna/Lens opening partially blocked	Re-position with unobstructed view of the road ahead
Erratic or frequent alerts	High concentration of non-police X band sources	Use CTY mode
No or Partial Display	Dim or Dark mode engaged	Disengage Dim or Dark Mode

Limited 1-Year Warranty

1. This warranty covers all defects in materials and workmanship. This warranty does not apply if the unit has been subject to physical abuse, improper installation, modification, or if the housing or serial number of the unit has been removed.
2. BELTRONICS manufactures its products using parts and components which are new or equivalent to new in accordance with industry standard practices.
3. The enforceability of this warranty is limited to the original consumer purchaser and is not transferable to, or enforceable by, any subsequent owner.
4. In the event of a defect, malfunction or other failure to conform to this warranty, BELTRONICS will, at its sole discretion, repair or replace the unit at no charge. You are responsible for all shipping costs in connection with warranty service pursuant to this warranty.
5. This warranty commences on the date of retail purchase and shall be effective for a period of one year.

8

6. There are no express warranties covering the unit other than those set forth in this warranty. All implied warranties are limited to the period of this warranty and no warranties, expressed or implied, extend beyond this period. Some states do not allow limitation on how long an implied warranty lasts, so the above limitation may not apply to you.
7. BELTRONICS will in no event be liable for any consequential, incidental, indirect or special damages (including, but not limited to, lost profits) arising out of or in connection with the use, misuse, or function of the unit. Some states do not allow the exclusion of limitation of incidental or consequential damages, so the above limitation or exclusion may not apply to you.
8. This warranty gives you specific legal rights, and you may also have other rights which vary from state to state.
9. You must provide a copy of a dated sales receipt for your unit in order to receive service under warranty.

Service

If you feel your detector is not functioning properly, please review this manual, particularly the section on Performance Verification. If you still feel service is required, please follow the instruction below.

1. To obtain service during the one-year warranty period, **please call the appropriate number below to obtain an RA number and shipping instructions.** Remember to return your detector postage paid, insured and in suitable packaging.
800-341-2288 USA
800-268-3994 CAN
2. For your own protection, obtain a proof of delivery receipt. Shipping costs are your responsibility.
3. Enclose with your unit the following information:
 - a) Your name, complete return address and written description of the problem. (NO P.O. Box please.)
 - b) A telephone number where you can be reached during regular business hours.
 - c) **A copy of your dated sales receipt.**



Post-Warranty Service

The following arrangements apply if the warranty period has expired or you are not able to provide a copy of your dated sales receipt indicating purchase within the last twelve months.

1. Follow steps 1 through 3(b) outlined in Warranty Service.
2. Enclose with your unit \$70.00 US or \$95 CAN to cover repair and postage return. If the repair cost exceeds that which is quoted, you will be notified.

Prices subject to change without notice.

Specifications

Radar Receiver Frequencies: 10.45 GHz to 10.60 GHz (X Band), 24.05 GHz to 24.25 GHz (K Band), 33.4 GHz to 36.0 GHz (Super Wideband Ka)

Operating Temperatures: -4°F to 158°F (-20°C to 70°C)

Power Supply Requirements: 13.8 Volts (10.5 volt to 16 volt range), 250 mA

Radar Antenna Type: Patented Diecast Horn with Integrated Transition to Microstrip Mixer

Maximum Dimensions: 5.3"(L) x 3.1"(W) x 1.8"(H)

Weight: 9.0 ounces

BELTRONICS reserves the right to incorporate design improvements which may not be reflected in the specifications listed in this owner's manual.

Accessories

If you require any additional accessories, replacement accessories or any accessory which is not included with your unit, call for more information, Monday to Friday, 9 AM - 5 PM EST.

1-800-341-2288 USA

1-800-268-3994 CAN